

# CERTIFICATE OF LOCATION OF GOVERNMENT CORNER

NORTHEAST Corner of Section 34, Township 105N, Range 42W

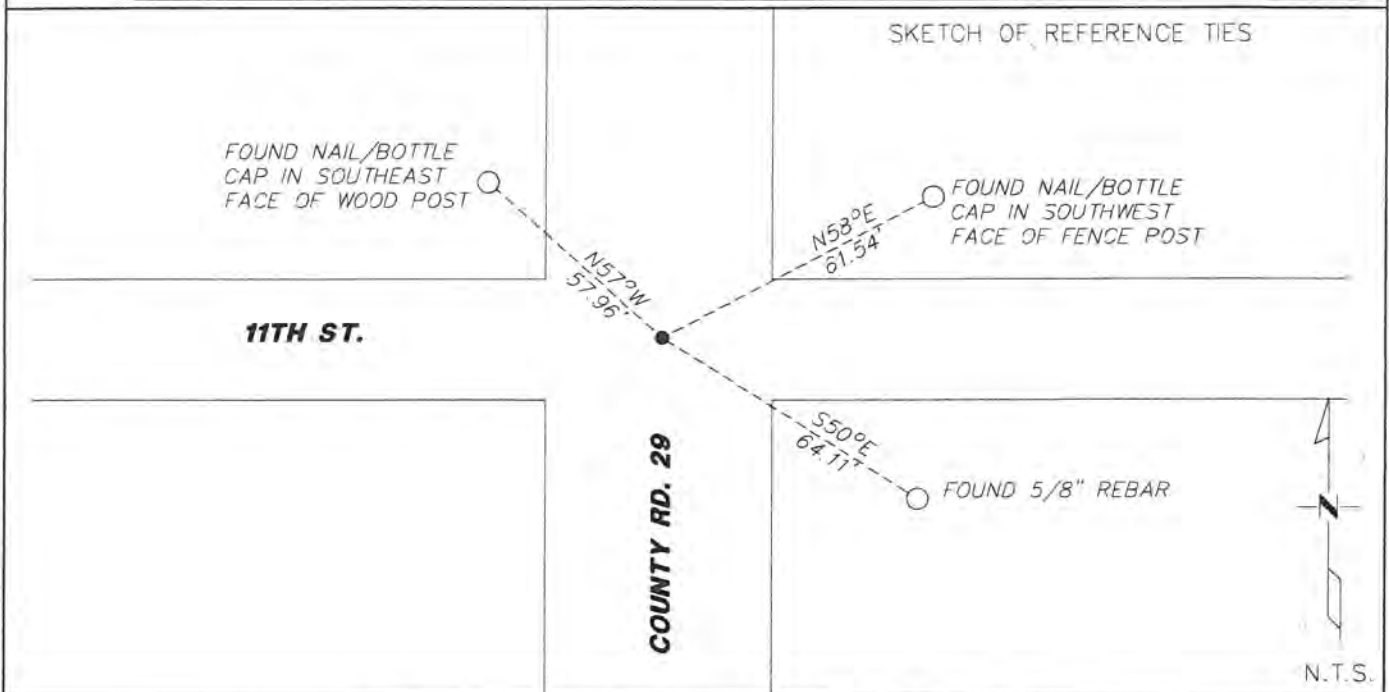
5th Principal Meridian, State of Minnesota, County of Murray.

At the corner location shown on the sketch:

On 05/16/19 found a mag nail on centerline of intersection.  
DATE

left monument as found     lowered monument     removed monument (explain)

On \_\_\_\_\_ placed a \_\_\_\_\_  
DATE



Statement of evidence for this corner location is on back of this page.

I hereby certify that this document was researched and prepared by me or under my direct supervision and that I am a licensed Land Surveyor under the laws of the State of Minnesota.

Signature [Handwritten Signature]

Date 6/27/19 License No. 49563

Title:

- Land Surveyor     Professional Engineer  
 County Surveyor     County Engineer

OFFICE OF THE COUNTY RECORDER

County of Murray

I hereby certify that this document was filed in the Co.

Recorder's office at 9:00 A.M. on the 8<sup>th</sup> day of JULY A.D. 20 19

County Recorder Evelyn Larson

by \_\_\_\_\_, Deputy

DOCUMENT NO. —

### Statement of Evidence:

Northeast corner of Section 34, Township 105 North, Range 42 West, 5th Principal Meridian, Murray County, Minnesota.

1901 Murray County, located a stone in grade. Measured 2657.5' to the NQ of Sec. 35.

1971 Murray County section notes, placed a 3/4" iron above stone. Set 3 ties.

N & C in CFP SW 67.08'

N & C in PP NW 57.55'

N & C in CFP NE 60.80'

1997 Murray County, placed a PK nail.

2006 Westwood Professional Services placed a 1/2" pipe with LS 42604 cap, 0.4' down at centerline of road, Set 3 ties.

2015 Murray County Highway Department, Placed a mag nail after 2015 overlays, 0.5' east of centerline on County Road 29. Established coordinates.

2019 Westwood Professional Services searched area and found a mag nail on centerline of a N,S,E,W intersection. Found 3 ties of unknown origin. Fits distance within 1.5' from 1901 survey measuring to the NQ corner of Sec. 35. Matches coordinates provided by Murray County Highway Department.

Analysis of the recovered data, field evidence and survey measurements, indicates that the monument found is the correct perpetuation of this corner. For additional information concerning this corner please contact Westwood Professional Services.

